

Artificial Intelligence in Medicine Transformation (AIMx) Programme

Purpose of the Study

Cardiovascular disease (CVD) is the leading cause of death, representing 31% of all global deaths in 2016. Vessels of the eye (retina) have been proposed as the 'window' to the body's circulatory system and have been correlated with CVD. With the help of AI analysis, this study seeks to understand the relationship between coronary artery disease and retina images.

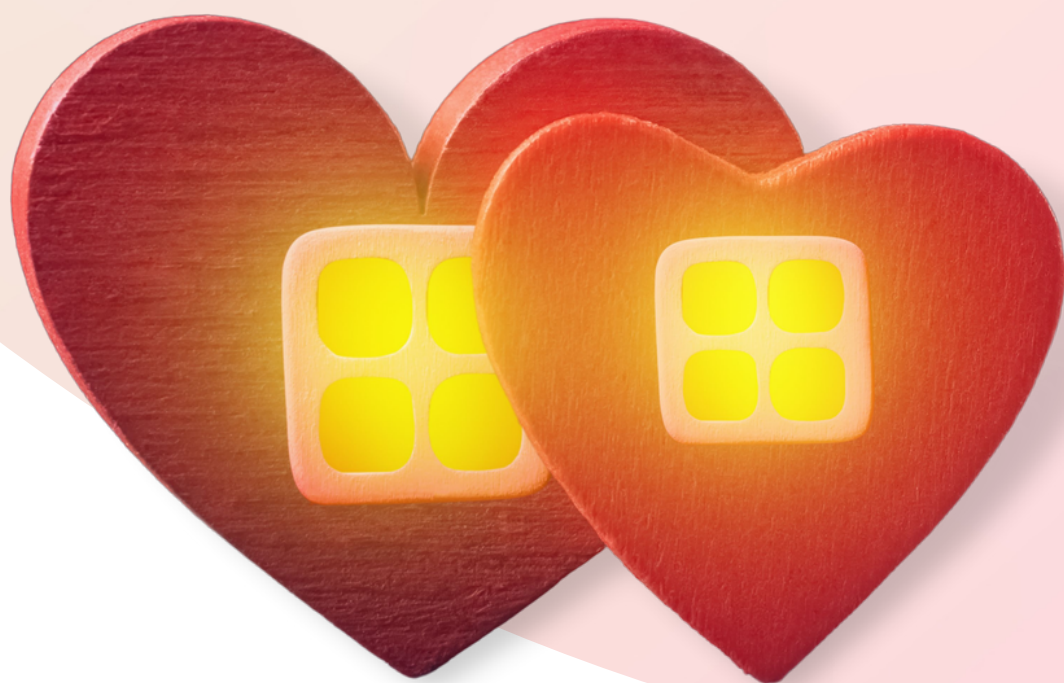
Who are we looking for?

- ✓ 21 years of age or older
- ✓ Upcoming or completed cardiac investigations (Angiogram, CT scans or Echocardiogram).

What is included in this study?

- ✓ Eyes scan (Non-invasive)
- ✓ Questionnaires

All briefing sessions will be at National Heart Centre Singapore, 5 Hospital Drive, Singapore 169609. If you are interested in the study, please contact **6704 2297/ 6704 2280** from Monday to Friday (8.30am to 5.30pm) or email audrey.teh.y.l@nhcs.com.sg / james.low.j.y@nhcs.com.sg



Your eyes are the windows to the heart!



National Heart
Centre Singapore
SingHealth

